

## Light O'Clock (Season 1) – Episode 2: Light's journey through the eye

Guidolin, C., & Fernandez-Alonso, M. (Hosts). (2024). *Light O'Clock (Season 1) – Episode 2: Light's journey through the eye* [Audio podcast episode].

Translational Sensory & Circadian Neuroscience Unit

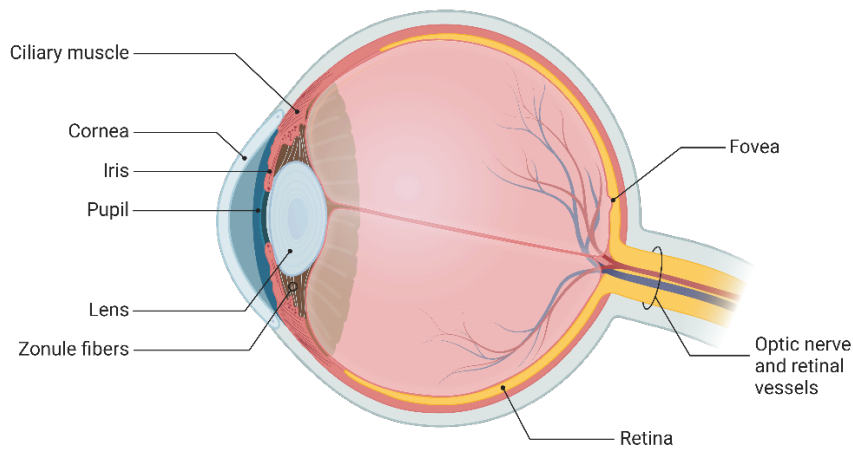
(MPS/TUM/TUMCREATE). <https://www.tscnlab.org/podcast/s01e02> DOI:

<https://doi.org/10.17617/1.16tx-3391>

### Anatomy of the eye (sagittal view)

Adapted from "Anatomy of the Human Eye", by BioRender.com (2023). Retrieved from <https://app.biorender.com/biorender-templates>.

### Anatomy of the human eye



### The retina

Adapted from "Structure of the Retina", by BioRender.com (2023). Retrieved from <https://app.biorender.com/biorender-templates>.

### Cells in the human retina

